



## Effect of Chronic Treatment with Vitamin E on Endothelial Dysfunction in a Type I in Vivo Diabetes Mellitus Model and in Vitro

S. Dhein, A. Kabat, A. Olbrich, P. Rösen, H. Schröder and F.-W. Mohr

University of Leipzig, Heart Centre Leipzig, Clinic for Cardiac Surgery, Leipzig, Germany

### Abstract

Diabetes mellitus often leads to generalized vasculopathy. Because of the pathophysiological role of free radicals we investigated the effects of vitamin E. Twenty-eight rats were rendered diabetic by streptozotocin injection and were fed either with a diet with low (10 mg/kg of chow), medium (75 mg/kg of chow) or high amounts of vitamin E (1300 mg/kg of chow). Nine age-

matched nondiabetic rats receiving 75 mg of vitamin E/kg chow served as controls. After 7 months, mesenteric microcirculation was investigated.

Smooth muscle contractile function was not altered in diabetic versus nondiabetic vessels. Endothelial function was significantly reduced in diabetics; relaxation upon 1  $\mu$ M acetylcholine was reduced by 50% in diabetics with a medium and high vitamin E diet. In vitamin E-deprived rats, a complete loss of endothelium-dependent relaxation was observed, and instead, acetylcholine elicited vasoconstriction. L- $N^G$ -Nitro-arginine-induced vasoconstriction was reduced in small arteries in diabetics, which was not prevented by vitamin E, but was aggravated by vitamin E deprivation. In a subchronic endothelial cell culture model, cells were cultivated with 5 or 20 mM D-glucose for an entire cell culture passage (4 days) with or without vitamin E (20 mg/l versus 0.01 mg/l). Hyperglycemia led to significant reduction in basal and ATP-stimulated nitric oxide (NO)-production. Hyperglycemia-induced reduction in basal NO-release was significantly prevented by vitamin E, whereas reduction in stimulated NO-release was not influenced. NADPH-diaphorase activity was reduced by 40% by hyperglycemia, which was completely prevented by vitamin E. We conclude that 1) vitamin E has a potential to prevent partially hyperglycemia-induced endothelial dysfunction, 2) under in vivo conditions vitamin E deficiency enhanced diabetic endothelial dysfunction dramatically,

- ▲ [Top](#)
- [Abstract](#)
- ▼ [Introduction](#)
- ▼ [Materials and Methods](#)
- ▼ [Results](#)
- ▼ [Discussion](#)
- ▼ [References](#)

### This Article

- ▶ [Abstract](#) **FREE**
- ▶ [Full Text \(PDF\)](#)
- ▶ All Versions of this Article: [jpet.102.045740v1](#)  
305/1/114 *most recent*
- ▶ [Submit a response](#)
- ▶ [Alert me when this article is cited](#)
- ▶ [Alert me when eLetters are posted](#)
- ▶ [Alert me if a correction is posted](#)
- ▶ [Citation Map](#)

### Services

- ▶ [Similar articles in this journal](#)
- ▶ [Similar articles in PubMed](#)
- ▶ [Alert me to new issues of the journal](#)
- ▶ [Download to citation manager](#)
- ▶ [Cited by other online articles](#)

### Google Scholar

- ▶ [Articles by Dhein, S.](#)
- ▶ [Articles by Mohr, F.-W.](#)
- ▶ [Articles citing this Article](#)

### PubMed

- ▶ [PubMed Citation](#)
- ▶ [Articles by Dhein, S.](#)
- ▶ [Articles by Mohr, F.-W.](#)

and 3) positive effects of vitamin E may be attenuated with a longer disease duration.

## ▶ Introduction

▲ <a href="#">Top</a>
▲ <a href="#">Abstract</a>
■ <a href="#">Introduction</a>
▼ <a href="#">Materials and Methods</a>
▼ <a href="#">Results</a>
▼ <a href="#">Discussion</a>
▼ <a href="#">References</a>

An intriguing problem in internal medicine is the development of generalized angiopathy in the course of diabetes mellitus. This is associated with the occurrence of endothelial dysfunction (Oyama et al., 1986<sup>[1]</sup>; Cameron and Cotter, 1992<sup>[2]</sup>; Pieper and Peltier, 1995<sup>[3]</sup>; Olbrich et al., 1996<sup>[4]</sup>; Pieper et al., 1997<sup>[5]</sup>). It is known that hyperglycemia can lead to changes in endothelial nitric-oxide production or release; short-term or subacute exposition to high D-glucose was shown to result in enhanced NO release (Graier et al., 1993<sup>[6]</sup>, 1996<sup>[7]</sup>), whereas chronic exposure during an entire cell culture passage leads to reduced NO-release (Olbrich et al., 1999<sup>[8]</sup>) and diminished calcium signals (Salmeh and Dhein, 1998<sup>[9]</sup>). It was hypothesized by these authors and by others (Pieper et al., 1997<sup>[5]</sup>; Du et al., 2000<sup>[10]</sup>; Nishikawa et al., 2000<sup>[11]</sup>) that free radicals may be involved in the pathophysiology of endothelial dysfunction. Meanwhile, there is broad evidence supporting an important pathophysiological role for free radicals in diabetic vasculopathy (Spitaler and Graier, 2002<sup>[12]</sup>). Thus, a central role for superoxide overproduction in the pathobiochemistry of the main pathways of hyperglycemia-related changes, i.e., activation of protein kinase C, accumulation of advanced glycation end products, and increased flux of glucose through the aldose reductase pathway, has been shown (Nishikawa et al., 2000<sup>[11]</sup>). Recently, Rösen and colleagues (1998<sup>[13]</sup>) showed that vitamin E can prevent reduction in endothelial NO release in diabetic rat heart. They postulated that during hyperglycemia the endothelium may be deprived with L-arginine or that an increased NO level may be inactivated by increased levels of free radicals (Rösen et al., 1998<sup>[13]</sup>). In addition, Cinar and colleagues (2001<sup>[14]</sup>) showed in a 3-month model of diabetes a protective effect of 1000 mg of vitamin E/kg of chow against endothelial dysfunction. Similarly, a protective effect was shown in a mouse model (Göçmen et al., 2000<sup>[15]</sup>) or in a 2-month rat model (Keegan et al., 1995<sup>[16]</sup>). In support of these studies, Kunisaki and colleagues (1995<sup>[17]</sup>) showed in a rat model that diabetes led to enhanced protein kinase C translocation and increased diacylglycerol formation, which both could be prevented by a 2-week vitamin E treatment in retinal vascular endothelial cells. In another diabetes rat model, vitamin E attenuated, but did not completely prevent, diabetes-induced endothelial dysfunction (Karasu et al., 1997a<sup>[18]</sup>). Two-month, dietary, vitamin E supplementation in the diabetic rat reduced lipid peroxide levels (Karasu et al., 1997b<sup>[19]</sup>). It remained unclear, however, whether such positive effects of vitamin E might be attenuated in models with longer duration of the disease.

Although vitamin E treatment was shown to prevent from thromboxane overproduction in diabetic patients (Gisinger et al., 1988<sup>[20]</sup>), which has been suggested to indicate a possible vasoprotective effect, and although improvement of endothelial function in diabetic patients by vitamin E has been found (Skyrme-Jones et al., 2000<sup>[21]</sup>), others failed to demonstrate a positive preventive effect of additional vitamin E in diabetes mellitus (Nickander et al., 1994<sup>[22]</sup>; Dagenais et al., 2001<sup>[23]</sup>; Lonn, 2001<sup>[24]</sup>; Lonn et al., 2001<sup>[25]</sup>).

Since diabetes is a chronic disease and most animal studies investigated a considerably short duration of diabetes (from 1 to 3 months), we wanted to know whether vitamin E influences vascular function in a long-term diabetes rat model of a 7-month duration, which is approximately a quarter of the normal life span of the rat. Furthermore, we wanted to elucidate the effects of vitamin E in a subchronic cell culture model of hyperglycemia, previously established by our group (Salmeh and Dhein, 1998<sup>[9]</sup>), with a duration of an entire cell culture passage (and not only 24 h as often used). Thus, the aims of our study were to test whether, in an in vivo type I diabetes mellitus rat model, vitamin E deprivation might worsen the development of endothelial dysfunction and whether vitamin E supplementation (medium and high) might prevent it. Furthermore, it should be investigated whether in a subchronic cell culture model chronic

hyperglycemia leads to reduced endothelial NO production and whether this can be prevented by vitamin E.

## ▶ **Materials and Methods**

▲ <a href="#">Top</a>
▲ <a href="#">Abstract</a>
▲ <a href="#">Introduction</a>
▪ <a href="#">Materials and Methods</a>
▼ <a href="#">Results</a>
▼ <a href="#">Discussion</a>
▼ <a href="#">References</a>

### **In Vivo Study**

All experiments were performed according to the ethical rules of the Council for International Organization of Medical Science and the German laws for animal welfare. We used a streptozotocin rat model of type I diabetes with a duration of diabetes of 7 months, as described (Dhein et al., 2000<sup>+</sup>). Four experimental groups were investigated: 1) control animals without treatment (normal vitamin E alimentation, 75 mg/kg of chow) ( $n = 9$ ), 2) diabetic animals without treatment (normal vitamin E alimentation, 75 mg/kg of chow) ( $n = 6$ ), 3) diabetic animals receiving a vitamin E-enriched diet (1300 mg/kg of chow) ( $n = 8$ ), and 4) diabetic animals receiving a vitamin E-deprived diet (0.55 mg/kg of chow) ( $n = 6$ ). Vitamin E was supplied as  $\alpha$ -tocopherol. Vitamin E plasma levels were  $10 \pm 1$  mg/l in animals receiving medium vitamin E alimentation,  $19 \pm 2$  mg/l in animals receiving a vitamin E-enriched diet, and  $2.2 \pm 1$  mg/l in rats receiving a vitamin E-deprived diet. For comparison normal rat diets are supplemented with vitamin E ranging from 30 to 200 mg/kg of chow (so that 75 mg/kg of chow resembles a normal rat diet) (Lehr et al., 1999<sup>+</sup>).

For induction of diabetes mellitus, six-week-old male Wistar Kyoto rats ( $140 \pm 20$  g) were rendered diabetic with an i. p. injection of streptozotocin (60 mg/kg b.wt.), as described (Dhein et al., 2000<sup>+</sup>). Two weeks after the induction of diabetes mellitus, animals were randomized to the treatments, i.e., no treatment, a vitamin E-enriched diet, or vitamin E-deprived diet. The animals did not receive an antidiabetic treatment.

**Vascular Function.** For functional measurements of smooth muscle and endothelial function, a mesenteric loop was isolated with the appertaining intestine (8 cm in length) according to the technique described earlier (Dhein et al., 1992<sup>+</sup>, 2000<sup>+</sup>; Olbrich et al., 1996<sup>+</sup>). The mesenteric artery was cannulated and perfused with oxygenated Tyrode's solution (161.02 mM Na<sup>+</sup>, 5.36 mM K<sup>+</sup>, 1.8 mM Ca<sup>2+</sup>, 1.05 mM Mg<sup>2+</sup>, 146.86 mM Cl<sup>-</sup>, 23.80 mM HCO<sub>3</sub><sup>-</sup>, 0.42 mM H<sub>2</sub>PO<sub>4</sub><sup>-</sup>, and 10.00 mM glucose, pH adjusted to 7.4; gassed with 95% O<sub>2</sub> and 5% CO<sub>2</sub>). An 8-cm loop of the small intestine was ligated, and all side branches of the mesenteric vessels were sealed by ligation so that an isolated mesenteric fold with the appertaining intestine, and the perfusing arterial network was prepared. This preparation was fixed to a perfusion system with a constant perfusion pressure of 70 cm of H<sub>2</sub>O, which corresponds to the actual physiological perfusion pressure in the mesenteric artery in this model. Ten cannulas were inserted into the intestine to provide drainage. With the help of a microscope (Carl Zeiss GmbH, Jena, Germany) and a video camera (Sony, Tokyo, Japan), which was mounted behind the ocular of the microscope, the mesenteric vessels were displayed on a monitor (Sony). The total magnification was 240-fold. In the course of the experiments, pictures of the arteries were recorded. Vessel diameters were determined during the experiment directly on the screen and, after the experiments, re-evaluated in the digitalized pictures using a frame grabber board (Data Translation, Inc., Marlboro, MA) with JAVA software (Jandel Scientific, Erkrath, Germany). The vessel diameter was assessed by analyzing the first derivative of the gray level along a cross sectional line (orthogonal to the vessels longitudinal axis). The distance between the extremata corresponds to the vascular diameter. We classified microvessels according to the generation theory of Ley and colleagues (1986<sup>+</sup>) as G1 vessels, which are the branch perfusing the isolated loop. The subsequent branches were classified as G2, G3, and G4 vessels, the latter being those vessels at the border between the mesenterium and gut. More details of the method are given by Olbrich et al. (1999<sup>+</sup>).

After an equilibration period of 60 min to achieve a constant resting tone, vessels were precontracted by infusion of 70 mM KCl (20 min) followed by treatment with KCl (70 mM) and 1  $\mu$ M glyceryl trinitrate (GTN) (20 min). After washout and reaching the precontraction tone with 70 mM KCl alone, vessels were perfused with 70 mM KCl and 1  $\mu$ M acetylcholine (20 min). After washout, the vessels were exposed to 3  $\mu$ M L-N<sup>G</sup>-nitro-arginine (20 min) for inhibition of NO synthase. KCl was used as constrictor since this was also used by others in diabetic rat mesenteric vessels (Ralevic et al., 1995<sup>[1]</sup>; Van Buren et al., 1998<sup>[2]</sup>; Misurkski et al., 2001<sup>[3]</sup>) and was reported by these authors to be only weakly affected by diabetes.

We wanted to use a constrictor that is not or only weakly affected by diabetes. In accordance with the above-mentioned literature, KCl seems to be suitable. The response to methoxamine or other constrictors acting via receptors might be altered in diabetes if the signal transduction pathways or the receptors themselves are affected (e.g., by advanced glycation end products). Thus, Van Buren et al. (1998<sup>[2]</sup>) describe that the sensitivity for norepinephrine is altered in diabetes, whereas the sensitivity for KCl is not (or only weakly). Similarly, methoxamine-induced contraction is attenuated (Misurski et al., 2001<sup>[3]</sup>). It should be mentioned, however, that endothelium-derived hyperpolarizing factor-dependent relaxations might be affected by KCl.

## Cell Culture Study

**Cell Isolation and Culture.** In previous investigations, we established a subchronic cell culture model of hyperglycemia-induced endothelial dysfunction (Salameh and Dhein, 1998<sup>[4]</sup>) using porcine aortic endothelial cells exposed to hyperglycemia for an entire culture cell passage (4 days). Therefore, porcine aortic endothelial cells were isolated and cultured according to Rosenthal and Gotlieb (1990<sup>[5]</sup>), as previously described (Salameh et al., 1997<sup>[6]</sup>). Briefly, the endothelial cells were harvested from porcine thoracic aorta using 1 mg/ml dispase, seeded (100,000 cell/cm<sup>2</sup>) in plastic 9.6-cm<sup>2</sup> Petri dishes (Nalge Nunc International, Wiesbaden, Germany), and cultured with M199 at 37° C, saturated humidity and 5% CO<sub>2</sub>. After reaching confluence, the cells were passaged and seeded again. Purity of the cell culture was tested by uptake of 1,1'-dioctadecyl-3,3,3'-tetramethylindocarbocyanine-acetylated low-density lipoprotein (Dil-Ac-LDL) (Voyta et al., 1984<sup>[7]</sup>) and, for detecting contaminating smooth muscle cells, by staining of  $\alpha$ -smooth muscle actin. At the start of the third passage, the cells were submitted to the various treatments. The different experimental protocols were carried out with cells of the same cell line for intraindividual control (i.e., all cells were derived from the same aorta) at the moment when they were seeded for third passage.

Thus, we used the following experimental groups: 5 mM D-glucose alone ( $n = 9$ ), 5 mM D-glucose plus 15 mM L-glucose (for osmotic control) ( $n = 6$ ), 5 mM D-glucose plus 20 mg/l vitamin E ( $\alpha$ -tocopherol) ( $n = 6$ ), 20 mM D-glucose (high D-glucose, "hyperglycemia") ( $n = 6$ ), and 20 mM D-glucose plus 20 mg/l vitamin E ( $\alpha$ -tocopherol) ( $n = 6$ ). The specific treatment of the different control or experimental groups started at the third passage and lasted until the cells had reached confluence (3-4 days). As before, the medium was changed three times a week.

**Histological Studies.** For H&E staining, endothelial cell monolayers were washed three times with phosphate-buffered saline (PBS) (containing 137 mM NaCl, 2.68 mM KCl, 8.1 mM Na<sub>2</sub>HPO<sub>4</sub>, 1.47 mM KH<sub>2</sub>PO<sub>4</sub>, buffered at pH 7.4) and fixed in paraformaldehyde solution (4% paraformaldehyde in PBS) for 30 min at room temperature. After we removed the fixative, the cells were stained in 1% hematoxylin and 0.5% eosin following classical protocols and embedded in Karion F (Merck, Darmstadt, Germany).

**NADPH-Diaphorase Staining.** The NADPH-diaphorase reaction was carried out according to Hope et al. (1991<sup>[8]</sup>). In



brief, confluent monolayers were fixed in 4% paraformaldehyde for 30 min at room temperature and incubated in the staining solution, containing 0.5 mM nitro blue tetrazolium, 1 mM  $\beta$ -NADPH, 0.2% Triton X-100, 50 mM Tris, and 75 mM NaCl, buffered at pH 8.0, for 20 h at 37°C. Thereafter, the preparations were washed three times in PBS and embedded in Karion F.

For quantitative analysis, the histologic specimens were viewed through a microscope (Leitz, Wetzlar, Germany) and a Sony video camera (Video 8, CCD-V90E sensitivity 7 lux; Sony), which communicated with a video frame-grabber board (QuickCapture Board DT 2855; Data Translation, Inc.) and a common PC system. The pictures were converted digitally and could be analyzed by means of the picture-analyzing system JAVA (Jandel video analysis software; Jandel Scientific). This software allowed the determination of NADPH-diaphorase activity by evaluating the intensity of the blue color staining for NADPH-diaphorase (reduced nitro blue tetrazolium) of approximately 100 cells within an area of interest in each cell line. The number of giant cells (cells 3-4 times larger than normal endothelial cells) was counted under the microscope at 400 $\times$  magnification within a visual field of 40 mm<sup>2</sup>, arbitrary marked [*x* visual fields per experimental series (i.e., *y* visual fields per cell line)].

**Measurement of Nitric Oxide Release.** To characterize endothelial function, we measured the NO release spectrophotometrically (UV-DU-7500; Beckmann Coulter, Inc., Munich, Germany) under basal conditions and after stimulation with ATP (1 mM) using the methemoglobin assay (Feelisch and Noack, 1987<sup>[4]</sup>), based on the rapid oxidation of reduced methemoglobin (oxy-Hb, oxyhemoglobin, Fe<sup>2+</sup>) to methemoglobin (Met-Hb; Fe<sup>3+</sup>) by nitric oxide. The suitability and specificity of this assay has been demonstrated previously (Kelm et al., 1997<sup>[4]</sup>). We monitored increasing amounts of methemoglobin versus oxyhemoglobin by means of the difference spectrum (Feelisch and Noack, 1987<sup>[4]</sup>). The bioassay was calibrated as described previously (Feelisch and Noack, 1987<sup>[4]</sup>; Kelm et al., 1988<sup>[4]</sup>). We found an extinction coefficient *e* of 39 mM<sup>-1</sup> cm<sup>-1</sup>, which is nearly identical to that described by Feelisch and Noack (1987<sup>[4]</sup>). After reaching confluence, the porcine aortic endothelial cell were washed three times with HEPES buffer (composed of 145.0 mM NaCl, 5.0 mM KCl, 2.5 mM CaCl<sub>2</sub>, 1.0 mM MgCl<sub>2</sub>, 10.0 mM HEPES, and 5.0 mM D-glucose), at pH 7.4 and 37°C, preincubated with 4 ml of HEPES buffer for 20 min at 37°C, and supplemented with oxy-Hb-solution (4  $\mu$ M). After an equilibration period of 50 min, 1 mM ATP was added, and subsequently, NO release was recorded for 40 min; the cycling time was 10 min, at 37°C, for each cell culture condition intraindividually. To obtain the actual formation of methemoglobin, representing the NO release by PAEC, we subtracted the spontaneously occurring formation of methemoglobin, determined from a cell-free incubation solution from the measurements.

**Chemicals.** All chemicals were obtained from Sigma-Aldrich (Deisenhofen, Germany) except for Dil-Ac-LDL, which was obtained from Paesel & Lorei (Frankfurt, Germany); dispase was obtained from Roche Molecular Biochemicals (Mannheim, Germany); nitro blue tetrazolium was purchased from Biomol (Hamburg, Germany). KCl were obtained from Merck, and ACh and heparin were supplied by Serva (Heidelberg, Germany). All cell culture media and fetal calf serum were obtained from Sigma-Aldrich (St. Louis, MO); the cell culture material was obtained from Nalge Nunc International. All chemicals were of analytic grade and were dissolved in bidistilled water if not stated otherwise.

### Statistical Analysis

For statistical analysis, a two-factorial analysis of variance was performed. If analysis of variance indicated significant differences or significant interactions between disease and treatment, the data were further analyzed with a post hoc Tukey-high standard deviation test. For the statistical analysis, we used Systat for Windows software, version 5.02 (Systat, Evanston, IL). Differences were considered significant if *p* < 0.05.

## Results

- [▲ Top](#)
- [▲ Abstract](#)
- [▲ Introduction](#)
- [▲ Materials and Methods](#)
- [Results](#)
- [▼ Discussion](#)
- [▼ References](#)

### In Vivo Study

Streptozotocin injection caused diabetes mellitus within 2 weeks and blood glucose levels of  $>18$  mM in all diabetic groups (no differences between the three diabetic groups). In nondiabetic age-matched control animals, we found blood glucose levels ranging from 3.5 to 5.6 mM. Body weight was reduced in diabetic animals [ $228 \pm 10$  (d.m.),  $237 \pm 3$  (d.m. + vitamin E),  $199 \pm 7$  g (d.m. - vitamin E)] compared with nondiabetic age-matched controls ( $418 \pm 8$  g). Plasma vitamin E levels were  $10 \pm 1$  mg/l (animals receiving 75 mg/kg of chow),  $19 \pm 2$  mg/l (animals receiving a vitamin E-enriched diet), and  $2.2 \pm 1$  mg/l (rats on a vitamin E-deprived diet) (see Table [1](#)).

TABLE 1

**View this table:** **Bodyweight, blood glucose levels, and vitamin E plasma levels of the four experimental groups given as the means  $\pm$  S.E.M**

[\[in this window\]](#)

[\[in a new window\]](#)

With regard to the vascular parameters, the initial diameters of the mesenteric microvessels under resting conditions were somewhat enlarged in diabetic animals (see Table [2](#)). This was not influenced by the treatment.

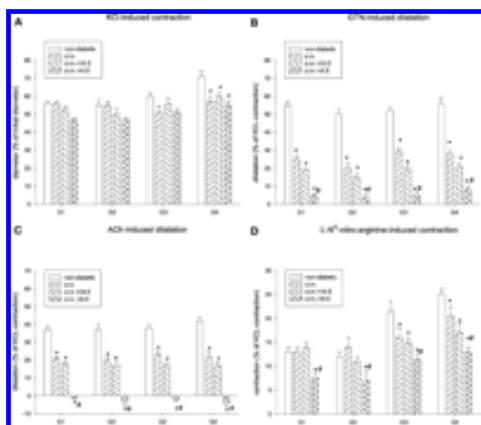
TABLE 2

**View this table:** **Initial diameter of mesenteric microvessels (generation G1 to G4) of nondiabetic control rats, diabetic rats, and diabetic rats (d.m.) receiving a high vitamin E diet (d.m. + Vit E), or receiving a vitamin E-deprived diet (d.m. - Vit E) under resting conditions given as the means  $\pm$  S.E.M.**

[\[in this window\]](#)

[\[in a new window\]](#)

Regarding smooth muscle vascular function, we found a reduction in vessel diameter by 70 mM KCl between 44 and 29% in nondiabetics. In G1, G2, and G3 vessels, this was not significantly altered in diabetics. In G4 vessels, KCl-induced constriction was slightly attenuated in diabetics. Additional vitamin E treatment or vitamin E deficiency did not influence KCl contraction (see Fig. [1A](#)).



View larger version (44K):

[\[in this window\]](#)

[\[in a new window\]](#)

**Fig. 1.** Vascular reactions in nondiabetic and chronic (6 months) streptozotocin-induced diabetic (d.m.) rat mesenteric microvasculature with or without additional vitamin E treatment or with vitamin E deficiency. The figure shows the reactions of four branches of the mesenteric microcirculation (G1 to G4, initial diameters see Table 1). All values are given as the means  $\pm$  S.E.M. of  $n = x$  experiments (for  $n$  see Table 1). Statistical differences to nondiabetics is marked by an asterisk; statistical difference versus diabetes mellitus is indicated by a # ( $p < 0.05$ ). A, shows the effect of 70 mM KCl on vascular tone in G1 to G4 mesenteric microvessels in a percentage of initial diameter. B, gives the relaxation of the mesenteric microvessels in response to 1  $\mu$ M GTN as a percentage of KCl contraction. C, the effect of 1  $\mu$ M ACh is depicted as a percentage of KCl contraction. Note that in vitamin E-deficient diabetics, ACh no longer induced relaxation but resulted in a slight further contraction. D, shows the effect of 3  $\mu$ M L- $N^G$ -nitro-arginine on vascular tone. The contractions evoked by 3  $\mu$ M L- $N^G$ -nitro-arginine are normalized to the contractions elicited by KCl, and data are given as a percentage of KCl contraction.

GTN application in all vessels lead to significant vasodilation, which was diminished in diabetics. Additional treatment with vitamin E did not influence GTN-induced vasorelaxation. In vitamin E-deprived rats, however, we found significantly decreased GTN-induced relaxation compared with untreated diabetics (see Fig. 1B).

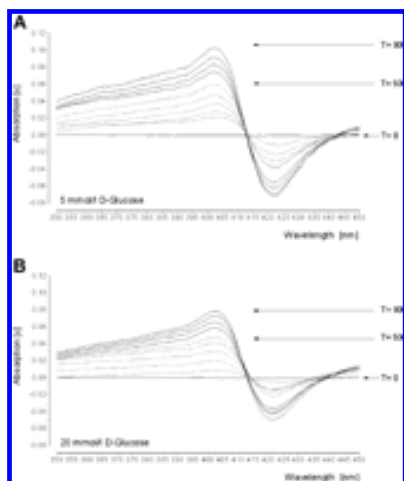
Acetylcholine induced vasorelaxation in all vessels in nondiabetic rats. In diabetic rats, this ACh-induced relaxation was significantly decreased, which was not influenced by vitamin E treatment. With vitamin E deficiency, however, we found complete abolition of ACh-induced relaxation. In contrast, ACh in these rats induced slight vasoconstriction (Fig. 1C).

Finally, we applied L- $N^G$ -nitro-arginine (LNNA), which resulted in a significant vasoconstriction of all vessels. The LNNA-induced vasoconstriction reached 8 to 14% of the KCl-constriction. In diabetic rats, this LNNA-induced constriction was significantly reduced in G3 and G4 vessels. This was not influenced by vitamin E treatment. In rats with vitamin E deficiency, however, we found significant attenuation of LNNA-induced vasoconstriction in all vessels (Fig. 1D).

## Cell Culture Study

**NO Release.** Cells reached confluence after  $3.5 \pm 0.5$  days without differences between the groups. We found the typical difference spectrogram for Met-Hb versus oxy-Hb with an isobest at  $412 \pm 1$  nm and maximum extinction at  $402 \pm 1$  nm, as described by Feelisch and Noack (1987) [2]. Under basal condition using normal cells, there was a slow increase in extinction, as can be seen in Fig. 2A during the first 50 min, indicating increasing formation of Met-Hb and release of NO. Stimulation with 1 mM ATP led to a further increase in extinction. In cells that were grown under hyperglycemic conditions, however, basal formation of Met-Hb was significantly reduced (Figs. 2B and 3). ATP-stimulated formation of Met-Hb was also clearly diminished (Fig. 3). Quantitatively we found basal release of  $80 \pm 20$  pMol  $\cdot$  1 Mio cell $^{-1}$   $\cdot$  10 min $^{-1}$ , which was significantly diminished to  $40 \pm 10$  pMol  $\cdot$  1 Mio cell $^{-1}$   $\cdot$  10 min $^{-1}$ .

$-1$  ( $p < 0.05$ ) (Fig. 3). ATP-stimulated NO-release was significantly reduced from  $130 \pm 20$  (normal cells) to  $92 \pm 10$  pMol  $\cdot$  1 Mio cell $^{-1} \cdot$  10 min $^{-1}$  in hyperglycemic cells ( $p < 0.05$ ).

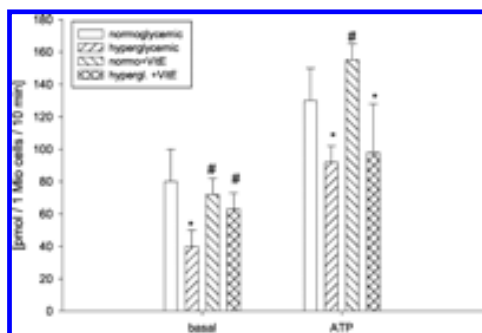


View larger version (27K):

[\[in this window\]](#)

[\[in a new window\]](#)

**Fig. 2.** Difference spectrum of oxyhemoglobin versus methemoglobin obtained from cultured PAEC under normal (A) and hyperglycemic (B) conditions over a period of 90 min displaying the characteristic absorption maximum at 401 nm, with an isobestic point at 411 nm, a negative absorption maximum at 421 nm, and straight lines between 401 and 411 nm ( $\pm 1.25$  nm tolerance regarding the precision of the instrument). The reaction was carried out in HEPES-buffered solution in the presence of  $4.0 \mu\text{M/l}$  oxyhemoglobin at pH 7.4 and  $37^\circ\text{C}$ , as described (see *Materials and Methods*). Note the increase in Met-Hb formation evident from increasing absorption with time and its attenuation in hyperglycemic cells (B).



View larger version (21K):

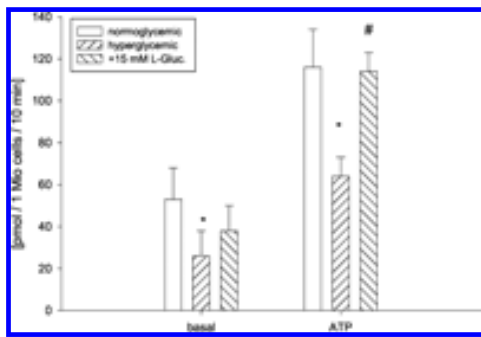
[\[in this window\]](#)

[\[in a new window\]](#)

**Fig. 3.** Formation of nitric oxide in normo- and hyperglycemic endothelial cells with or without additional vitamin E treatment under basal conditions (left) and after stimulation with 1 mM ATP (right). All values are given as the means  $\pm$  S.E.M. of  $n = 6$  experiments. Statistical differences to nondiabetics is marked by an asterisk; statistical difference versus diabetes mellitus is indicated by a # ( $p < 0.05$ ). Note that vitamin E prevents from hyperglycemia-induced reduction in basal but not stimulated NO formation.

The reduction in basal NO-release in hyperglycemic cells was significantly antagonized by vitamin E (Fig. 3). Stimulated NO-release, however, was not affected by vitamin E treatment; in vitamin E-treated cells, stimulation with 1 mM ATP resulted in  $155 \pm 20$  pMol  $\cdot$  1 Mio cell $^{-1} \cdot$  10 min $^{-1}$  in normoglycemic and  $98 \pm 40$  pMol  $\cdot$  1 Mio cell $^{-1} \cdot$  10 min $^{-1}$  in hyperglycemic cells. Thus, there was no antagonization of the glucose effect by vitamin E regarding stimulated NO-release (Fig. 3). The osmotic control using additional 15 mM L-glucose revealed that there was no alteration by 15 mM L-glucose compared with normoglycemia (Fig. 4).





**View larger version (16K):**

[\[in this window\]](#)

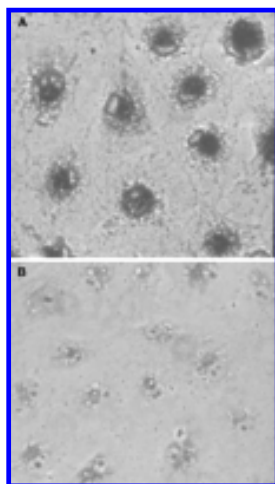
[\[in a new window\]](#)

**Fig. 4.** Formation of nitric oxide in normo- and hyperglycemic (+15 mM D-glucose) endothelial cells and in cells treated with 15 mM L-glucose as an osmotic control under basal conditions (left) and after stimulation with 1 mM ATP (right). All values are given as the means  $\pm$  S.E.M. of  $n = 6$  experiments. Statistical differences to nondiabetics is marked by an asterisk,; statistical difference versus diabetes mellitus is indicated by a # ( $p < 0.05$ ). Note that 15 mM L-glucose (in contrast to 15 mM D-glucose) does not reduce NO formation.

**Histology.** For further characterization of the glucose effects, we investigated the cultured cells histologically. In all cell lines investigated,  $>99\%$  of the tested cells incorporated Dil-Ac-LDL, with no significant differences between the two experimental groups. The content of contaminating smooth muscle cells was  $<0.1\%$ . The high D-glucose-treated cell lines did not show any promotion of smooth-muscle cell growth in culture. The three control groups (5 mM D-glucose without any treatment or with 20 mg/l vitamin E or with 15 mM L-glucose) exhibited no significant differences concerning their cell morphology. Moreover, the number of giant cells and the NADPH-diaphorase activity per cell were not different between the control groups.

Morphological analysis of the cells revealed that hyperglycemia led to an enhanced number of giant cells, which was significantly increased from  $7 \pm 2$  to  $17 \pm 3$  under treatment with high levels of D-glucose ( $p < 0.05$ ). In vitamin E-treated cells, this increase in giant cell number was significantly prevented ( $p < 0.05$ ). Thus, in vitamin E-treated normoglycemic cells, we found  $6 \pm 3$  and in hyperglycemic vitamin E-treated cells  $7 \pm 3$ .

Furthermore, the high D-glucose influence on PAEC was characterized by a reduction in histochemical NADPH-diaphorase activity. Considering the intensity of reduced nitro blue tetrazolium in relationship to the total area of interest, we found an intensity of  $53.6 \pm 2.6$  densitometric units in normoglycemic cells versus  $30.4 \pm 2.5$  densitometric units in hyperglycemic cells ( $p < 0.05$ ) (Fig. 5). Treatment with vitamin E significantly prevented from this reduction in NADPH-diaphorase activity:  $47.3 \pm 3.5$  versus  $47.6 \pm 2.5$  densitometric units ( $n = 8$ ).



**View larger version**

**Fig. 5.** Original photographs showing NADPH-diaphorase activity as assessed by histochemical nitro blue tetrazolium staining in normoglycemic (upper panel) and hyperglycemic (lower panel) endothelial cells (400 $\times$  magnification). Formation of the blue formazan stain indicates NADPH-diaphorase activity. Note the typical positive dark staining in the perinuclear zone, which is diminished in the hyperglycaemic cells.

(88K):

[\[in this window\]](#)

[\[in a new window\]](#)

## Discussion

▲	<a href="#">Top</a>
▲	<a href="#">Abstract</a>
▲	<a href="#">Introduction</a>
▲	<a href="#">Materials and Methods</a>
▲	<a href="#">Results</a>
■	<a href="#">Discussion</a>
▼	<a href="#">References</a>

**In Vivo Study.** Taken together our data show that smooth muscle contractile function was not altered by diabetes mellitus, as evident from the nearly unchanged KCl-induced contractions. Relaxation to GTN and ACh were significantly attenuated, however. This diabetes-induced deficit in relaxation was not influenced by high vitamin E treatment but was further enhanced by vitamin E deficiency. It is well known that GTN-induced vasorelaxation depends on glutathione-dependent release of NO from *S*-nitrosothiol-derivatives of GTN. Since diabetes deprivation of glutathion occurs in vascular tissue (Kinalski et al., 2000<sup>+</sup>), it is reasonable that in our study relaxation to GTN was attenuated in diabetic rats. In contrast, ACh-induced relaxation depends on release of NO from functional vascular endothelium. As in previous studies (Olbrich et al., 1996<sup>+</sup>, 1999<sup>+</sup>; Dhein et al., 2000<sup>+</sup>), ACh-induced vasorelaxation was diminished in diabetics, indicating endothelial dysfunction. Interestingly, although this was not affected by high vitamin E treatment, vitamin E deficiency further diminished vasorelaxant response to GTN and completely abolished relaxation to ACh, with a reversal of the ACh-response so that vasoconstriction occurred. It should be mentioned that vitamin E deprivation for 4 to 12 months itself impairs endothelial relaxation, whereas smooth muscle responses are not affected (Rubino and Burnstock, 1994<sup>+</sup>; Rubino et al., 1995<sup>+</sup>; Ralevic et al., 1995<sup>+</sup>). These investigators, however, observed only reduced vasorelaxation in vitamin E deprivation. Thus, both diabetes mellitus and vitamin E deprivation can lead to an impairment of endothelial function. The combination of diabetes and vitamin E deprivation, however, seems to be even more deleterious, leading to complete loss of endothelial function so that ACh elicits vasoconstriction. This is, to our best knowledge, the first article showing this dramatic change in the response to acetylcholine.

In accordance with the impaired ACh-induced relaxation, we found vasoconstriction in response to the NO-synthase inhibitor LNNA, which were significantly attenuated in vitamin E deficiency. The vasoconstriction to LNNA may be interpreted as the consequence of inhibition of basal NO release which was more prominent in G3 and G4 vessels. The results indicate that there was less basal NO production in diabetic animals in G3 and G4 vessels and further attenuation of basal NO release in vitamin E deficiency. As an explanation, it has been argued that in vitamin E deficiency with concomitant hyperglycemia there is enhanced production of free radicals which can interact with NO leading to inactivation of NO (Pieper et al., 1997<sup>+</sup>; Stockklauser-Farber et al., 2000<sup>+</sup>). Moreover, our finding of a diminished GTN-induced relaxation in vitamin E deficient diabetic rats can be explained by the observation that reduction in glutathion levels occurs in vitamin E deficiency and is further enhanced in concomitant diabetes mellitus (Nickander et al., 1994<sup>+</sup>).

These results may indicate that with 75 mg of vitamin E/kg of chow there was no deficit in vitamin E and that high vitamin E treatment does not improve vascular function in this long-term model. It should be mentioned, however, that high vitamin E intake may further impair endothelial function, as was shown in a 1-month rat diabetes model (Palmer et al., 1998<sup>+</sup>). Our results would be in accordance with the findings of the HOPE study (Dagenais et al., 2001<sup>+</sup>). Nevertheless, our data clearly indicate that vitamin E deficiency dramatically worsens the situation and aggravates diabetes-induced vascular dysfunction, in accordance with another clinical study (Salonen et al., 1995<sup>+</sup>) or animal

studies (Vanucchi et al., 1999; Nickander et al., 1994). Since vitamin E is a well known radical scavenger, this may further support the hypothesis of a pathophysiological role for free radicals in diabetic vascular dysfunction.

**In Vitro Study.** To investigate the results of the in vivo study in more detail, we exposed endothelial cells subchronically to hyperglycemia for an entire culture passage, which resulted in reduced NO release. This could partially be prevented by vitamin E; only the hyperglycemia-induced reduction in basal NO release was prevented by vitamin E, whereas reduction in stimulated NO release was not prevented.

Hyperglycemia-induced reduction in basal and stimulated NO-release could be explained by reduced arginine supply or reduced access to the intracellular arginine pool (Pieper and Peltier, 1995; Closs et al., 2000; Hardy and May, 2002) or by reduced eNOS activity following mitochondrial superoxide overproduction which can lead to *O*-linked *N*-acetylglucosamine modification of eNOS (Du et al., 2001) via activation of hexosamine pathway (Du et al., 2000). Igarashi and Michel (2001) suggested that the production of reactive oxygen species leads to activation of the glucosamine pathway by activation of glutamin-fructose-6-phosphate aminotransferase, finally leading to *O*-glycosylation of eNOS. The latter has been shown in a cell culture model similar to ours after chronic exposure (2 days) to high D-glucose levels (Du et al., 2001). eNOS expression, however, is not altered in hyperglycemia (Stockklauser-Farber et al., 2000). Rösen and coworkers (1996), however, showed increased eNOS activity that was assumed to compensate for enhanced NO inactivation by free radicals in the heart, although in the recent study these investigators did not find enhanced eNOS activity (Stockklauser-Farber et al., 2000). Another explanation could be a reduction in NADPH supply (a necessary cofactor for eNOS). Yet, others showed that NADPH is not altered in hyperglycemia (Asahina et al., 1995) but is reduced if additional oxidative stress is present. On the other hand, Soriano and colleagues (2001a) demonstrated in a streptozotocin mouse model that vascular NAD(+), NADPH, and ATP levels were decreased. These authors showed that activation of poly(ADP-ribose)-polymerase (PARP) by oxidant-induced DNA-strand breakage [via glucose-induced free radical generation (Soriano et al., 2001b)] is involved in diabetic endothelial dysfunction. Most interestingly, endothelial (Soriano et al., 2001a) and cardiac (Pacher et al., 2002) dysfunction were prevented by treatment with a PARP inhibitor. Moreover, PARP-inhibition restored NAD(+), NADPH, and ATP levels (Soriano et al., 2001a). Thus, PARP may deplete the intracellular concentration of its substrate NAD(+), thereby reducing the rate of glycolysis and ATP formation (Soriano et al., 2001b). The depletion in intracellular high energy phosphate levels, NAD(+), and NADPH by PARP activation may affect eNOS activity since eNOS is an NADPH-dependent enzyme (Soriano et al., 2001a).

It can be argued that reduced NADPH-diaphorase activity as found in our study may indicate dysfunction of the enzyme or the enzyme complex, possibly by alteration of the enzyme, e.g., by advanced glycation end products, *O*-linked *N*-acetylglucosamine modification, or damage by free radicals. Interestingly, activity of NADPH-diaphorase could be preserved by vitamin E treatment. Thus, endothelial dysfunction in hyperglycemia and its partial prevention by vitamin E may be related to enhanced inactivation of NO by free radicals or to alteration in intracellular enzymes as was shown for NADPH-diaphorase. Another factor probably involved may be the intracellular energy crisis induced by oxidant-induced DNA breakage-dependent PARP activation, as discussed above (Soriano et al., 2001a).

According to the literature, reactive oxygen species overproduction is a key factor in hyperglycemia leading to reduced eNOS activity, advanced glycation end products, enhanced sorbitol formation, activation of protein kinase C, nuclear factor- $\kappa$ B activation (Nishikawa et al., 2000), and inactivation of NO (Pieper et al., 1997; Stockklauser-Farber et al., 2000). Consequently, treatment with a radical scavenger could be a promising therapy. Accordingly, in our study, vitamin E prevented from reduced basal NO release, which would support a role of reactive oxygen species either in inactivating NO or in alteration of eNOS. Nevertheless, hyperglycemia-induced reduction in stimulated NO release

was not influenced by vitamin E. This would contradict a general role of reactive oxygen species for altered eNOS leading to reduced eNOS activity. Accordingly, Stockklauser-Farber et al. (2000) [1] showed that eNOS activity was not altered in vivo in diabetic rat hearts. This supports the hypothesis that, in addition to the above-mentioned mechanisms, the signal transduction process is altered in hyperglycemia. In favor of this theory, we could show that the calcium signal following ATP stimulation of endothelial cells was significantly diminished in hyperglycemia (Salameh and Dhein, 1998) [2].

**What Are the Reasons for the Discrepant Findings with Vitamin E?** There is some contradiction between the in vivo study and the in vitro results in our study that should be discussed. Although in the in vitro study vitamin E prevented hyperglycemia-induced impairment of NO-release, we did not observe influence of vitamin E on LNNA-response. On the one hand, there is a radical scavenging effect that might be present in both the in vivo and the in vitro situation. On the other hand, the vasoprotective effect of  $\alpha$ -tocopherol in vivo also comprises binding of the vitamin to the vitamin E binding protein, transportation with the lipoproteins, and preservation of unsaturated bonds in essential fatty acids such as  $\alpha$ -linolenic acid and eicosapentaenoic acid. Thus, in long-term in vivo situation, this more complex mechanism of action of vitamin E involving essential fatty acids might be affected in diabetes. Accordingly, a reduction in the eicosapentaenoic/arachidonic acid ratio was found in diabetic rats (Ikeda and Sugano, 1993) [3]. The metabolism in long-term diabetes probably is more complex than simple hyperglycemia, as may be indicated by the loss of body weight in these rats. Moreover, this difference between results obtained from cultured cells and in vivo results may indicate that diabetes mellitus means more than simply hyperglycemia. In addition, results from cultured porcine aortic endothelial cells cannot completely simulate the situation in the long-term in vivo mesentery artery of the diabetic rat. Another aspect is the duration of the disease or hyperglycemia. In a rat model, 7 months probably is a long duration. Thus, positive effects seen with vitamin E in a model with only a 2-week or 2- to 3-month duration (Keegan et al., 1995) [4]; Kunisaki et al., 1995) [5]; Karasu et al., 1997a) [6],b) [7] may be attenuated by the long duration of the disease.

To our surprise, our study partially reflected the inhomogeneity of the literature (Nickander et al., 1994) [8]; Skyrme-Jones et al., 2000) [9]; Dagenais et al., 2001) [10]; Lonn, 2001) [11]; Lonn et al., 2001) [12]), with the in vitro study demonstrating only a partial protective effect of vitamin E, whereas the in vivo study only showed a negative effect of vitamin E deficiency but no effect of additional vitamin E. One factor jeopardizing the results with vitamin E in the literature is that the "normal" vitamin E supplementation is defined depending on the country; in United States, vitamin E supplementation in a normal rat diet is approximately 30 mg/kg of chow, whereas in the United Kingdom 90 to 120 mg/kg of chow is considered normal. In Germany, the daily intake for a normal rat is 200 mg/kg of chow (Lehr et al., 1999) [13]. To circumvent this problem in our study, we investigated three different supplementations (10, 75, and 1300 mg/kg of chow). With regard to the recent findings of a lack of effect of vitamin E in the HOPE (Dagenais et al., 2001) [10] and SECURE (Lonn et al., 2001) [12] clinical studies, this emphasizes the necessity of preclinical in vivo studies.

Regarding the comparison of the in vivo and in vitro studies, a first issue to mention is that endothelial cells grown on plastic or glass dishes are not identical to endothelial cells growing under in vivo conditions exposed to flowing blood. A second issue is that cells in culture grow considerably faster than cells in a blood vessel. This could mean additional stress to the cells, and the metabolic activity of these growing cell in culture is probably higher than that of resting cells in a blood vessel. Along these lines is the observation that vitamin E treatment exhibited positive preventive effects on cells additionally stressed by H<sub>2</sub>O<sub>2</sub> (Asahina et al., 1995) [14]. Interestingly, in a study similar to ours, a protective effect of vitamin E against coronary endothelial dysfunction in hearts of streptozotocin-diabetic rats has been described (Rösen et al., 1995) [15]. It could be argued that due to the higher oxygen consumption and energy metabolism in the heart compared with mesenterium the formation of free radicals might be enhanced in diabetic high-energy-consuming

tissue such as cardiac tissue. In support of this theory, a preventive vitamin E effect was observed in diabetic pregnant rats, which also means a situation of enhanced oxidative stress (Kinalsky et al., 2000[4]).

Our in vitro study shows that vitamin E only prevented reduced basal NO release but not reduced stimulated NO release. This might indicate disturbed signal transduction in hyperglycemia, as was shown in a previous study investigating Ca<sup>2+</sup> signals in hyperglycemia (Salameh and Dhein, 1998[5]). Moreover, the lack of effect on stimulated NO release might explain the inefficacy of vitamin E in the in vivo model.

Thus, we conclude that high vitamin E treatment does not prevent diabetic vascular dysfunction in this long-term rat model. A deficiency in vitamin E, however, seems deleterious for endothelial function in diabetes mellitus. Positive effects of vitamin E, as seen in the cell culture model or by others in short term diabetic models (2 weeks to 3 months), may be attenuated with the long duration of diabetes.

## ▶ Acknowledgments

We greatly thank Prof. Dr. Renate Rösen for ideas and fruitful discussions. In addition, we thank Heidi Katzer and Karina Paulus for excellent technical assistance.

## ▶ Footnotes

Accepted for publication December 11, 2002.

Received for publication October 17, 2002.

This work was supported by a grant from Hoffmann-La Roche and from the German Diabetes Foundation.

DOI: 10.1124/jpet.102.045740

**Address correspondence to:** Prof. Dr. Stefan Dhein, University of Leipzig, Heart Centre Leipzig, Clinic for Cardiac Surgery, Strümpellstrasse 39, D-04289 Leipzig, Germany. E-mail: dhes[at]medizin.uni-leipzig.de

## ▶ Abbreviations

NO, nitric oxide; GTN, glyceryl trinitrate; Dil-Ac-LDL, 1,1'-dioctadecyl-3,3,3'-tetramethylindocarbocyanine-acetylated low-density lipoprotein; PBS, phosphate-buffered saline; oxy-Hb, oxy-hemoglobin; Met-Hb, met-hemoglobin; ACh, acetylcholine; d.m., streptozotocin-induced diabetic; LNNA, L-N<sup>G</sup>-Nitro-arginine; eNOS, endothelial nitric-oxide synthase; PARP, poly(ADP-ribose)-polymerase; Mio, million.

## ▶ References

- Asahina T, Kashiwagi A, Nishio Y, Ikebuchi M, Harada N, Tanaka Y, Takagi Y, Saeki Y, Kikkawa R and Shigeta Y (1995) Impaired activation of glucose oxidation and NADPH supply in human endothelial cells exposed to H<sub>2</sub>O<sub>2</sub> in high-glucose medium. *Diabetes* **44**: 520-526[Abstract].



- Cameron NE and Cotter MA (1992) Impaired contraction and relaxation in aorta from streptozotocin-diabetic rats: role of polyol pathway. *Diabetologia* **35**: 1011-1019[[Medline](#)].
- Cinar MG, Ulker S, Alper G and Evinc A (2001) Effect of dietary vitamin E supplementation on vascular reactivity of the thoracic aorta in streptozotocin-diabetic rats. *Pharmacology* **62**: 56-64[[CrossRef](#)][[Medline](#)].
- Closs EI, Scheld J-S, Sharafi M and Förstermann U (2000) Substrate supply for nitric oxide synthase in macrophages and endothelial cells: role of cationic amino acid transporters. *Mol Pharmacol* **57**: 68-74[[Abstract/Free Full Text](#)].
- Dagenais GR, Yusuf S, Bourassa MG, Yi Q, Bosch J, Lonn EM, Kouz S and Grover J (2001) Effects of ramipril on coronary events in high-risk persons: results of the Heart Outcomes Prevention Study. *Circulation* **104**: 522-526[[Abstract/Free Full Text](#)].
- Dhein S, Hochreuther S, Aus Dem Spring C, Bollig K, Hufnagel C and Raschack M (2000) Long-term effects of the endothelin<sub>A</sub> receptor antagonist LU 135252 and the angiotensin converting enzyme inhibitor trandolapril on diabetic angiopathy and nephropathy in a chronic type I diabetes mellitus model. *J Pharmacol Exp Ther* **293**: 351-359[[Abstract/Free Full Text](#)].
- Dhein S, Titzer S, Wallstein M, Müller A, Gerwin R, Panzner B and Klaus W (1992) Celiprolol exerts microvascular dilatation by activation of  $\beta_2$ -adrenoceptors. *Naunyn-Schmiedeberg's Arch Pharmacol* **346**: 27-31[[CrossRef](#)][[Medline](#)].
- Du X-L, Edelstein D, Dimmeler S, Ju Q, Sui C and Brownlee M (2001) Hyperglycemia inhibits endothelial nitric oxide synthase activity by post-translational modification at the Akt site. *J Clin Investig* **108**: 1341-1348[[Abstract/Free Full Text](#)].
- Du X-L, Edelstein D, Rossetti L, Fantus IG, Goldberg H, Zidayeh F, Wu J and Brownlee M (2000) Hyperglycemia-induced mitochondrial superoxide overproduction activates the hexosamine pathway and induces plasminogen activator inhibitor-1 expression by increasing SP-1 glycosylation. *Proc Natl Acad Sci USA* **97**: 12222-12226[[Abstract/Free Full Text](#)].
- Feelisch M and Noack EA (1987) Correlation between nitric oxide formation during degradation of organic nitrates and activation of guanylate cyclase. *Eur J Pharmacol* **139**: 19-30[[CrossRef](#)][[Medline](#)].
- Gisinger C, Jeremy J, Speiser P, Mikhailidis D, Dandona P and Scherthauer G (1988) Effect of vitamin E supplementation on platelet thromboxane A<sub>2</sub> production in type I diabetic patients. Double-blind crossover trial. *Diabetes* **37**: 1260-1264[[Abstract](#)].
- Göcmen C, Secilmis A, Kumcu EK, Ertug PU, Onder S, Dikmen A and Baysal F (2000) Effects of vitamin E and sodium selenate on neurogenic and endothelial relaxation of corpus cavernosum in the diabetic mouse. *Eur J Pharmacol* **398**: 93-98[[CrossRef](#)][[Medline](#)].
- Graier WF, Simecek S, Kukovetz WR and Kostner GM (1996) High D-glucose-induced changes in endothelial Ca<sup>2+</sup>/EDRF signaling are due to generation of superoxide anions. *Diabetes* **45**: 1386-1395[[Abstract](#)].
- Graier WF, Wascher TC, Lackner L, Toplak H, Krejs GJ and Kikovetz WR (1993) Exposure to elevated D-glucose concentrations modulates vascular endothelial cell vasodilatory response. *Diabetes* **42**: 1497-1505[[Abstract](#)].
- Hardy TA and May JM (2002) Coordinate regulation of L-arginine uptake and nitric oxide synthase activity in cultured endothelial cells. *Free Radic Biol Med* **32**: 122-131[[CrossRef](#)][[Medline](#)].
- Hope BT, Michael GJ, Knigge KM and Vincent SR (1991) Neuronal NADPH-diaphorase is a nitric oxide synthase. *Proc Natl Acad Sci USA* **88**: 2811-2814[[Abstract/Free Full Text](#)].
- Igarashi J and Michel T (2001) More sweetness than light? A search for the causes of diabetic vasculopathy. *J Clin Investig* **108**: 1425-1427[[Free Full Text](#)].
- Ikeda A and Sugano M (1993) Interaction of dietary protein and alpha-linolenic acid on polyunsaturated fatty

▲ <a href="#">Top</a>
▲ <a href="#">Abstract</a>
▲ <a href="#">Introduction</a>
▲ <a href="#">Materials and Methods</a>
▲ <a href="#">Results</a>
▲ <a href="#">Discussion</a>
■ <a href="#">References</a>

acid composition of liver microsomal phospholipids and eicosanoid production in streptozotocin-induced diabetic rats. *Ann Nutr Metab* **37**: 101-109[[Medline](#)].

- Karasu C, Ozansoy G, Bozkurt O, Erdogan D and Omeroglu S (1997a) Antioxidant and triglyceride-lowering effects of vitamin E associated with the prevention of abnormalities in the reactivity and morphology of aorta from streptozotocin-diabetic rats. Antioxidants in Diabetes-Induced Complications (ADIC) Study. *Metabolism* **46**: 872-879[[CrossRef](#)][[Medline](#)].
- Karasu C, Ozansoy G, Bozkurt O, Erdogan D and Omeroglu S (1997b) Changes in isoprenaline-induced endothelium-dependent and -independent relaxations of aorta in long-term STZ-diabetic rats: reversal effects of dietary vitamin E. *Gen Pharmacol* **29**: 561-567[[CrossRef](#)][[Medline](#)].
- Keegan A, Walbank H, Cotter MA and Cameron NE (1995) Chronic vitamin E treatment prevents defective endothelium-dependent relaxation in diabetic rat aorta. *Diabetologia* **38**: 1475-1478[[CrossRef](#)][[Medline](#)].
- Kelm M, Dahmann R, Wink D and Feelisch M (1997) The nitric oxide/superoxide assay. *J Biol Chem* **272**: 9922-9932[[Abstract/Free Full Text](#)].
- Kelm M, Feelisch M, Spahr R, Piper HM, Noack EA and Schrader J (1988) Quantitative and kinetic characterisation of nitric oxide and EDRF release from cultured endothelial cells. *Biochem Biophys Res Commun* **154**: 237-244.
- Kinalski M, Sledziewski A, Telejko B, Zarzicki W and Kinalska I (2000) Lipid peroxidation and scavenging enzyme activity in streptozotocin-induced diabetes. *Acta Diabetol Lat* **37**: 179-183[[CrossRef](#)].
- Kunisaki M, Bursell SE, Clermont AC, Ishii H, Ballas LM, Jirousek MR, Umeda F, Nawata H and King GL (1995) Vitamin E prevents diabetes-induced abnormal retinal blood flow via the diacylglycerol-protein kinase C pathway. *Am J Physiol* **269**: E239-E246[[Abstract/Free Full Text](#)].
- Lehr HA, Vajkoczy P, Menger MD and Arfors KE (1999) Do vitamin E supplements in diets for laboratory animals jeopardize findings in animal models of disease? *Free Radic Biol Med* **26**: 472-481[[CrossRef](#)][[Medline](#)].
- Ley K, Pries AR and Gaethgens P (1986) Topological structure of rat mesenteric microvessel networks. *Microvasc Res* **32**: 315-332[[CrossRef](#)][[Medline](#)].
- Lonn E (2001) Modifying the natural history of atherosclerosis: the SECURE trial. *Int J Clin Pract* **117 (Suppl)**: 13-18.
- Lonn E, Yusuf S, Dzavik V, Doris C, Yi Q, Smith S, Moore-Cox A, Bosch J, Riley W, Teo K, et al. (2001) Effects of ramipril and vitamin E on atherosclerosis: the study to evaluate carotid ultrasound changes in patients treated with ramipril and vitamin E (SECURE). *Circulation* **103**: 919-925[[Abstract/Free Full Text](#)].
- Misurski DA, Hopfner RL and Gopalakrishnan V (2001) Attenuated agonist evoked vasoconstrictor responses in the perfused mesenteric vascular bed of streptozotocin diabetic rats. *Exp Biol Med* **226**: 940-946[[Abstract/Free Full Text](#)].
- Nickander KK, Schmelzer JD, Rohwer DA and Low PA (1994) Effect of alpha-tocopherol deficiency on indices of oxidative stress in normal and diabetic peripheral nerve. *J Neurol Sci* **126**: 6-14[[CrossRef](#)][[Medline](#)].
- Nishikawa T, Edelstein D, Du X-L, Yamagishi S-I, Matsumura T, Kaneda Y, Yorek MA, Beebe D, Oates PJ, Hammes H-P, et al. (2000) Normalizing mitochondrial superoxide production blocks three pathways of hyperglycaemic damage. *Nature (Lond)* **404**: 787-790[[CrossRef](#)][[Medline](#)].
- Olbrich A, Rösen P, Klaus W and Dhein S (1996) Fosinopril improves the endothelium dependent regulation of the vascular tone in mesenteric vascular bed of diabetic rats. *J Cardiovasc Pharmacol* **27**: 187-194[[CrossRef](#)][[Medline](#)].
- Olbrich A, Salameh A, Rösen P and Dhein S (1999) Different effects of the b-adrenoceptor antagonists celiprolol and metoprolol on vascular structure and function in long-term type I diabetes mellitus in rats. *J Cardiovasc Pharmacol* **33**: 193-203[[CrossRef](#)][[Medline](#)].
- Oyama Y, Kawasaki H, Hattori Y and Kanno M (1986) Attenuation of endothelium-dependent relaxation in aorta from diabetic rat. *Eur J Pharmacol* **131**: 75-78[[CrossRef](#)][[Medline](#)].

- Pacher P, Liaudet L, Soriano FG, Mabley JG, Szabo E and Szabo C (2002) The role of poly(ADP-ribose) polymerase activation in the development of myocardial and endothelial dysfunction in diabetes. *Diabetes* **51**: 514-521 [[Abstract/Free Full Text](#)].
- Palmer AM, Thomas CR, Gopaul N, Dhir S, Anggard EE, Poston L and Tribe RM (1998) Dietary antioxidant supplementation reduces lipid peroxidation but impairs vascular function in small mesenteric arteries of the streptozotocin-diabetic rat. *Diabetologia* **41**: 148-156 [[CrossRef](#)] [[Medline](#)].
- Pieper GM, Langenstroer P and Siebeneich W (1997) Diabetic-induced endothelial dysfunction in rat aorta: role of hydroxyl radicals. *Cardiovasc Res* **34**: 145-156 [[CrossRef](#)] [[Medline](#)].
- Pieper GM and Peltier BA (1995) Amelioration by L-arginine of a dysfunctional arginine/nitric oxide pathway in diabetic endothelium. *J Cardiovasc Pharmacol* **25**: 397-403 [[Medline](#)].
- Ralevic V, Milla PJ and Burnstock G (1995) Effects of chronic vitamin E deficiency on vascular function—a study of sympathetic nerves, smooth muscle and endothelium of the mesenteric arterial bed of the rat. *Br J Pharmacol* **116**: 2983-2988 [[Medline](#)].
- Rösen P, Ballhausen T, Bloch W and Addicks K (1995) Endothelial relaxation is disturbed by oxidative stress in the diabetic rat heart: influence of tocopherol as antioxidant. *Diabetologia* **38**: 1157-1168 [[CrossRef](#)] [[Medline](#)].
- Rösen P, Ballhausen T and Stockklauser K (1996) Impairment of endothelium dependent relaxation in the diabetic rat heart: mechanisms and implications. *Diabetes Res Clin Pract* **31 (Suppl)**: S143-S155 [[CrossRef](#)] [[Medline](#)].
- Rösen P, Du X and Tschöpe D (1998) Role of oxygen derived radicals for vascular dysfunction in the diabetic heart: prevention by alpha-tocopherol? *Mol Cell Biochem* **188**: 103-111 [[CrossRef](#)] [[Medline](#)].
- Rosenthal AM and Gotlieb AI (1990) Macrovascular endothelial cells from porcine aorta, in *Cell Culture Techniques in Heart and Vessel Research* (Piper HM ed) pp 117-129, Springer-Verlag, Berlin.
- Rubino A and Burnstock G (1994) Recovery after dietary vitamin E supplementation of impaired endothelial function in vitamin E-deficient rats. *Br J Pharmacol* **112**: 515-518 [[Medline](#)].
- Rubino A, Loesch A, Goss-Sampson MA, Milla P and Burnstock G (1995) Effects of vitamin E deficiency on vasomotor activity and ultrastructural organisation of rat thoracic aorta. *Br J Pharmacol* **115**: 415-420 [[Medline](#)].
- Salameh A and Dhein S (1998) Influence of chronic exposure to high concentrations of D-glucose and long-term  $\beta$ -Blocker treatment on intracellular calcium concentrations of porcine aortic endothelial cells. *Diabetes* **47**: 407-413 [[Abstract](#)].
- Salameh A, Zinn M and Dhein S (1997) High D-glucose induces alterations of endothelial cell structure in a cell-culture model. *J Cardiovasc Pharmacol* **30**: 182-190 [[CrossRef](#)] [[Medline](#)].
- Salonen JT, Nyysönen K, Tuomainen TP, Maenpää PH, Korpela H, Kaplan GA, Lynch J, Helmrich SP and Salonen R (1995) Increased risk of non-insulin dependent diabetes mellitus at low plasma vitamin E concentrations: a four-year follow-up study in men. *Br Med J* **311**: 1124-1127 [[Abstract/Free Full Text](#)].
- Skyrme-Jones RA, O'Brien RC, Berry KL and Meredith IT (2000) Vitamin E supplementation improves endothelial function in type I diabetes mellitus: a randomized, placebo-controlled study. *J Am Coll Cardiol* **36**: 94-102 [[Abstract/Free Full Text](#)].
- Soriano FG, Pacher P, Mabley J, Liaudet L and Szabo C (2001a) Rapid reversal of the diabetic endothelial dysfunction by pharmacological inhibition of poly(ADP-ribose) polymerase. *Circ Res* **89**: 684-691 [[Abstract/Free Full Text](#)].
- Soriano FG, Virag L and Szabo C (2001b) Diabetic endothelial dysfunction: role of reactive oxygen and nitrogen species production and poly(ADP-ribose) polymerase activation. *J Mol Med* **79**: 437-448 [[CrossRef](#)] [[Medline](#)].
- Spitaler MW and Graier WF (2002) Vascular targets of redox signaling in diabetes mellitus. *Diabetologia* **45**: 476-494 [[CrossRef](#)] [[Medline](#)].

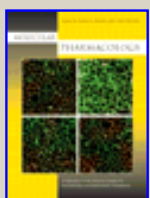
- Stockklauser-Farber K, Ballhausen T, Laufer A and Rösen P (2000) Influence of diabetes on cardiac nitric oxide synthase expression and activity. *Biochim Biophys Acta* **1535**: 10-20[[Medline](#)].
- Van Buren T, Vleeming W, Krutzen MM, Van de Kuil T, Gispen WH and De Wildt DJ (1998) Vascular responses of isolated mesenteric resistance and basilar arteries from short- and long-term diabetic rats. *Naunyn-Schmiedeberg's Arch Pharmacol* **358**: 663-670[[Medline](#)].
- Vanucchi H, Araujo WF, Bernardes MM and Jordao AA (1999) Effect of different vitamin E levels on lipid peroxidation in streptozotocin-diabetic rats. *Int J Vitam Nutr Res* **69**: 250-254[[Medline](#)].
- Voyta JC, Via DP, Butterfield CE and Zetter BR (1984) Identification and isolation of endothelial cells based on their increased uptake of acetylated low density lipoprotein. *J Cell Biol* **99**: 2034-2040[[Abstract](#)].

0022-3565/03/3051-0114-0122\$07.00

THE JOURNAL OF PHARMACOLOGY AND EXPERIMENTAL THERAPEUTICS

[Copyright © 2003 by The American Society for Pharmacology and Experimental Therapeutics](#)

**This article has been cited by other articles:** ([Search Google Scholar for Other Citing Articles](#))



### MOLECULAR PHARMACOLOGY

[▶ HOME](#)

M. Niehof and J. Borlak

#### **RSK4 and PAK5 Are Novel Candidate Genes in Diabetic Rat Kidney and Brain**

Mol. Pharmacol., March 1, 2005; 67(3): 604 - 611.

[\[Abstract\]](#) [\[Full Text\]](#) [\[PDF\]](#)



### Diabetes Care

[▶ HOME](#)

D. Manzella, R. Grella, A. M. Abbatecola, and G. Paolisso

#### **Repaglinide Administration Improves Brachial Reactivity in Type 2 Diabetic Patients**

Diabetes Care, February 1, 2005; 28(2): 366 - 371.

[\[Abstract\]](#) [\[Full Text\]](#) [\[PDF\]](#)



### JOURNAL OF PHARMACOLOGY AND EXPERIMENTAL THERAPEUTICS

[▶ HOME](#)

A. Kabat, K. Ponicke, A. Salameh, F.-W. Mohr, and S. Dhein

#### **Effect of a {beta}2-Adrenoceptor Stimulation on Hyperglycemia-Induced Endothelial Dysfunction**

J. Pharmacol. Exp. Ther., February 1, 2004; 308(2): 564 - 573.

[\[Abstract\]](#) [\[Full Text\]](#) [\[PDF\]](#)